

My new Gizmo

Well, all new devices don't need to cost hundreds of dollars. Let me tell you about my latest Gizmo, you might have one already.

A bit of History first, I recently bought a LensBaby Velvet 56 lens from Bronnie Fisher, a Tideland Photography Club founding member. I've heard so much about the Lensbaby lenses, I wanted to give it a try. I joined a Jamie Konarski Davidson's indoor workshop, in a large room with 4 masked and distanced participants. Jamie did a great job, as usual, with instructions and support for these closeup and Macro shots, with a focus on Lensbaby lenses.

Bronnie was kind enough to let me borrow her Velvet 56, so I was off to a new adventure. Here I need to state that the LensBaby lenses are Manual focus.

Okay now that the scenario is set, I quickly realized that when using a manual focus Macro lens like the Velvet 56, critical focus was very important in setting up the shot. Well I quickly realized my 70++ year old eyes were challenged to regularly achieve this critical focus, so I reached out to a few photo buddies (they were older than me, so they certainly had the same experience).

The fix that came from these discussions, was a Hoodman Loupe type device. These magnified the LCD screen and aided the focus. So I did some research and found several similar devices, all did the same thing, that is magnify the LCD screen 3X. But the costs range from \$16 to \$95.

Now I must be totally honest, I'm using a mirrorless camera which by design has a full time "Live View" on the LCD screen and it has a digital zoom focus assist, but still critical focus was hit or miss.

So much for the history, here's what I did and how this worked out.

After days of searching through Hunt's Photo, B&H, Adorama and Amazon, comparing features and costs, I decided on this device:

https://smile.amazon.com/gp/product/B07KJGQYJJ/ref=ppx_yo_dt_b_asin_title_o00_s00?ie=UTF8&th=1

Well, this was delivered mid week and I'm happy to report that this device did magnify my LCD screen adequately to permit me to obtain critical focus.

So how does this work? The Hoodman device fits on the back of my LCD screen, so as I set up to focus, I move my focus point in camera, then zoom focus into the scene. Now the Hood device covers the LCD screen and is aided by a 3 x magnifying lens. This allows me to manually tweak the focus satisfactorily.

There are other features that makes these devices easy to use.

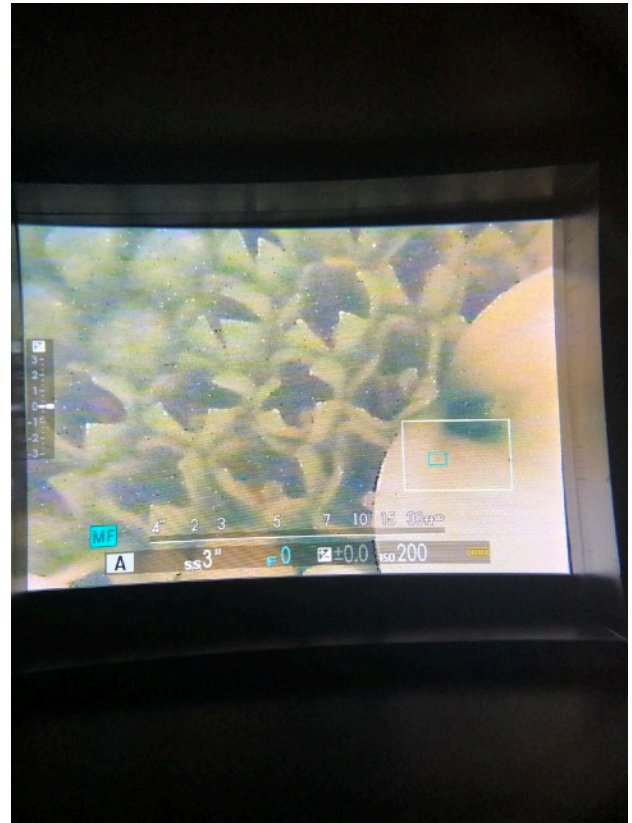
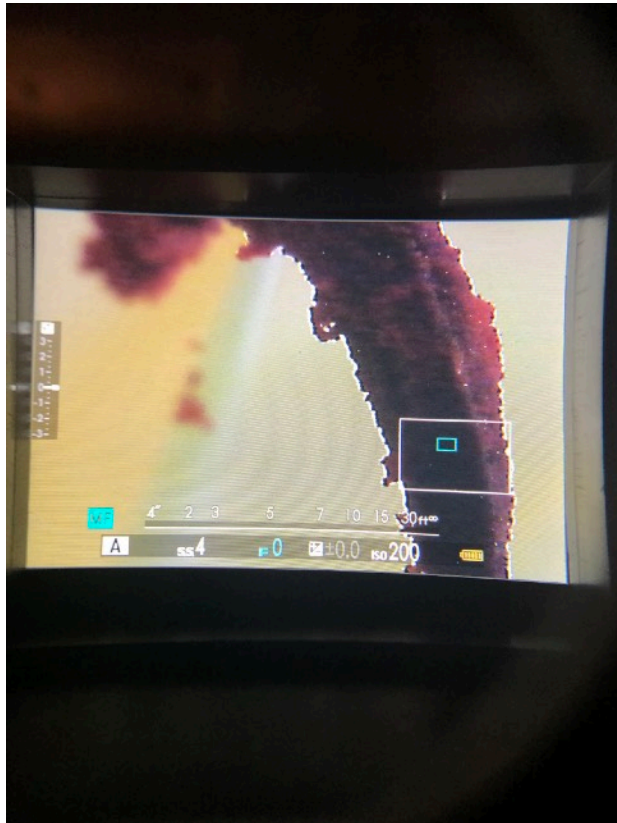
First, the hoodman device mounts on the LCD screen frame, so no part of the scene is lost.

This frame allows you to secure the frame to the mount effortlessly and accurately.

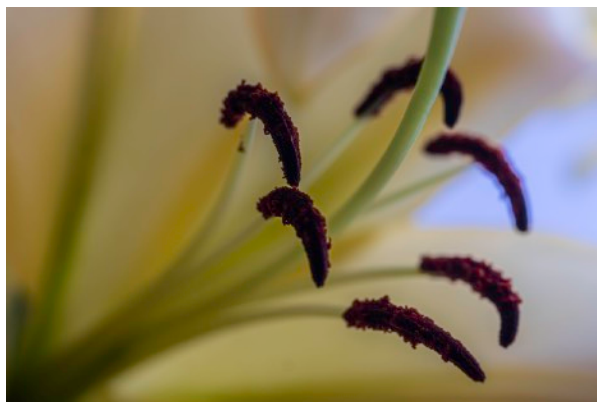
When the device is not needed it easily is removed, the frame stays mounted on the LCD, while the hoodman collapses making it easier to store.

Here are some photos of the device

This is a shot through the Hoodman lens, viewing. The digital Zoom image, the aqua rectangle was the focus point I choose.



These are the images produced:



Here's a few images of the HoodmanLoupe:



Hoodman Loupe showing Adhesive to mount on LCD frame

Hoodman Loupe Open



Hoodman Loupe Closed