

Tidelands Photography Club

**MAY/JUN 2020
PHOTOGRAPHY
CONTEST**

**INSIDE IT
BEGINNER**



Beginner
“My New Bed”
10

Cute image, nice timing to capture this moment. The clarity, sharpness and detail are all well done. It is unfortunate the towel and the canister in the background distract from the subject. Using a shallower depth of field to blur those area would eliminate the distraction. Placing your subject in the very middle of the frame can give the impression of a static image, if you have this opportunity again try a different angle and possibly placing the subject slightly off centre.

Tidelands Photography Club

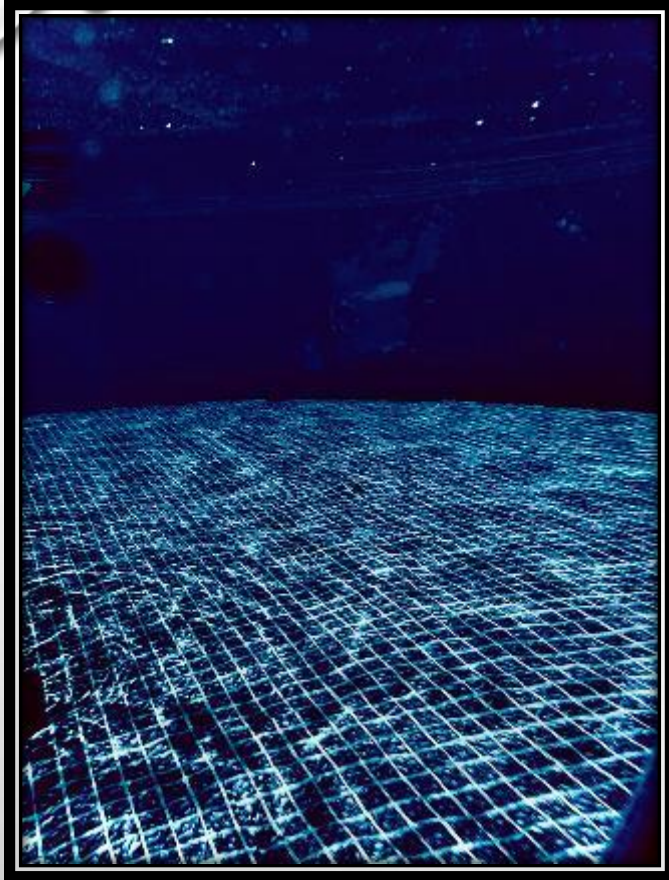
**MAY/JUN 2020
PHOTOGRAPHY
CONTEST**

**INSIDE IT
INTERMEDIATE**



Intermediate
“Cane”
8

Good attempt by the maker and the circular basket is a strong graphic element, unfortunately there is no distinct subject matter in this image. Although there are many bamboo sticks it does not provide a the viewer with what the specific subject matter is.



Intermediate
“Look Into the Unknown”

9

Image seems to mimic and night shot. The dark area in the lower right is distracting and could have been easily removed by cropping at the top edge of it. Although the shot is interesting if does not provide a centre of interest.

Nice reflection of the bag in the surface. The sharpest part of this image is the bag. The maker could use a aperture that would allow for the entire image to be tack sharp. When doing still life lighting is the most important, consider adjusting your lighting to create more drama in the image.



**Intermediate
"Surprise"
9**



**Intermediate
“Fruit Slices”**

9

Very graphical image, with all the circular objects. The image in the middle is sharp and good detail. The upper left and the upper right are soft and out of focus and take the viewers eye away from rest of the image.



**Intermediate
“Crystal Ball”**

10

Good use of the lens ball with nicely diffused soft area around the lens ball. This would be a much stronger image if the sky was not blown out with no detail in the clouds. Good attempt by the maker keep working on this technique.



Intermediate “In the Flower”

11

Very cool having the flower in the center of the lens. This would be a much stronger image if the areas outside of the lens was slightly soft/out of focus, just enough to soften that area but still identifiable.



Intermediate
“Inside It”
11

Strong graphic elements, placing the bullets in the image gives the viewer context to what the subject matter is. Good repetition. The area in the lower left just below the bullet is brighter than the rest of the image and a bit distracting, burning that area or toning down in post processing would help this image.



Intermediate
“Inside Atalaya Hallway”

12

Great detail, colour tones work well in this image. All the graphic elements add interest to the image. While the reflection in the window has nice colour the maker might consider cropping to the edge of the wooden frame and eliminating the colourful window which will put more emphasis on the brickwork and the graphic elements in the remainder of the image.



**Intermediate
"Snail Mail"
12**

Good detail, composition and DOF. Image is sharp were it needs to be and the two red mailboxes on either side of the white one with their texture adds balance to the image.



Intermediate
“Birds In & Out”
12

Very interesting, this maker is demonstrating ingenuity. The texture behind the image is well chosen and suit the subject matter well. The light grey pole behind the bird house in the image on the left is distracting and could have been removed in post processing. The sharpest part of the image to the right is the name on the Bird house, when shooting birds the bird being the subject should be the sharpest element in the image.



Intermediate
“Looking Into Portico”

13

Good tonal range and detail and exposure in light areas is well done. The oblique lines of the shadows adds drama to the image, while the repeating pillars draw the viewer into the image. Very minor distraction is the light area on the ground just past the end of the walkway.



Intermediate
“Seen Better Days”
14

Texture, colour and detail inside the truck is great. The environment outside the truck suites the truck era well. The only area that is a slight distraction is the white cloud in the left pain of the truck windshield near the top. Toning it down would eliminate the distraction.



Intermediate
"Another Blessed Day"

14

Lovely lighting, good detail in the building, with the railing and the light on the path drawing the viewers attention into the image. Maker chose a good time of day to create this image. This is very minor but the 1 small bright area at the bottom left side of the doorway could have been toned down as it is a bit bright and distracting slightly.



**Intermediate
“Penguin In”
15**

The maker has done a good job with this subject the eye and head are very sharp as they should be, the placement of the water line just above the eye is perfectly done. Colours, detail and DOF have all been handled well.



Tonal range in this image is excellent, great detail and the symmetry has been done very well. Having just the door in red which is a strong colour adds drama to this image.

**Intermediate
“Red Door”
15**

Tidelands Photography Club

**MAY/JUN 2020
PHOTOGRAPHY
CONTEST**

**INSIDE IT
ADVANCED**



**Advanced
“Inside Clock”
9**

Good attempt by the maker shooting this subject unfortunately the entire image is out of focus.



**Advanced
“Vitamin C”
10**

This image has nice composition, good detail in the orange itself but is suffering in some areas. The wedge of orange 2nd from right has a blur on the edge, the upper left corner has some white spots that could have been fixed in post processing. The cherry's appearance is strange there is a lighter streak across the top and a white speck in the middle.



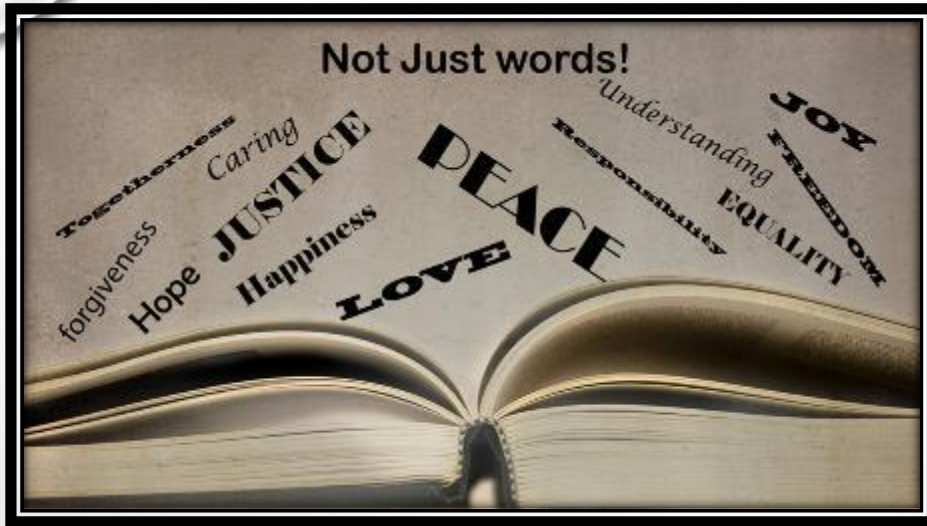
**Advanced
“Orange”
10**

Nice detail in the orange flesh area. The area that would be the middle of the orange is slightly out of focus. Maker might try cropping off the right just past the two larger oval area and down from the top slightly putting the centre of the orange in the top right corner, this would make for a stronger image.



**Advanced
“In the Tube”
12**

Perfect timing on this capture, the detail in the wave is very good as well the surfer and the board. The only areas that are distracting is the small white specks in the upper right just below the waves edge and then the specular highlights in the lower right corner, without out those the eye goes straight to the surfer were currently the eye is pulled away by the specular highlights.



Advanced “Not Just Words”

13

Great message in this image, DOF well handled, the almost no colour makes the message stand out, while providing just enough to give the image a soft feel. The only slight distraction is the white area to the left of the book binding which could have been toned down in post processing.



Advanced
“Surprise on
Lighthouse Staircase”
14

Detail, composition, exposure and lighting all handled well. The stairs with the semi circular shape draw the viewer into the image.



**Advanced
“Inside a BLT”
15**

Delightful image, great detail, lighting and composition. Colour tones in this image work well. Looks delicious.

The background of the entire image is a light gray gradient with several realistic water droplets of various sizes scattered across it. The droplets have highlights and shadows, giving them a three-dimensional appearance.

Tidelands Photography Club

**MAY/JUN 2020
PHOTOGRAPHY
CONTEST**

OPEN



Open
“Swan Lake”
9

Nice reflection of the swan in the water. When shooting birds or animals the head and eye area should be tack sharp in this image the feathers near the water surface are the sharpest part of the swan.



**Open
“Night Castle”
9**

The perspective of this image give the impression of the building leaning back, While the detail in the green trees is well defined the details on the building are soft. Placing the building right in the middle causes the image to be static. Obviously not being there I do not know if this was handheld but If it was shooting at night a tripod is very helpful.



The detail in the corn and the squirrel is well done. When moments like this happen we cannot control the elements in the background although cropping the dark area off the bottom and burning the white area behind the structure in post processing or at least toning down would help this image.

**Open
“Hanging On”**

9



Open
“Lake House in Maine”
9

Nice landscape image. The image would be stronger if the pier was not directly in the middle of the image. Consider reframing this image to move the horizontal line of the pier either higher or lower in the image, this would make it much stronger.



The treatment to this image is unique and although unique it does not add to the portrait of this woman. There is something about the right eye that does not appear natural and the lines across the image as well and the hat or material on her head do not work well together.

**Open
“Framed”**

9



Open
“Water Lily”
10

Exposure is well handled on the white petals of the lily. Suggest the maker try reframing the image from another angle or cropping 1/2 way into the lily pads this would still keep the lily slightly off centre and give the image more impact.



Open
“Daisy”
10

Fun with lens ball. The image within the ball is busy and hard to determine what the maker is attempting to bring the viewer to.



Open
“Girls Playing in the Straw”
10

Joyful image, with good detail in the child's face despite the straw falling in front of her face. The image was taken in harsh lighting conditions causing the bright streaks in the grass the the very bright area across the top of the image.



**Open
“Blue Bird”
10**

Lovely DOF and nice tones in the background set off the bird well. The placement of the bird is well done and fairly sharp. It is unfortunate that the birds beak is merging with the branch just behind it.



Open
"A Butterfly"
10

Interesting back light subject. Shows off the detail in the butterflies wings, unfortunately this images suffers from a lot of noise.



Open
“The Heavens Opened”
11

I believe these are called **God's rays** and the maker has done a great job of capturing them and keeping much of the detail in the bright sky area. Having the person in the image provides a sense of scale. If the maker could tone down that area in the sky that is very bright it would improve this image.



Open
“The Old Amid the New”
11

Interesting graphical image. The very bright white sky is harsh in the image. The maker might consider cropping the dark building on the left off the image this puts more emphasis on the right with the diagonal line leading the viewer into the tower. Suggest toning down the white sky.



Open
“Capturing Twins”

11

Cute idea taking a picture of the picture of the subjects. Composition is well done, good detail in the image on the camera and just enough DOF to soften the children behind the camera. There is some object just above the index finger which is distracting. Also having the feet poking out at the bottom of the camera is distracting, suggests cropping to the bottom edge of the camera.



Open
“Flying Bird”
12

Nice sharp image of this bird taking off, great detail. If the maker were to crop the dark area at the top of the image off it would be stronger and put more attention on the bird. The dark area is not adding anything to this image.



**Open
“Pink Flower”
12**

Very nice. Great detail in the floral bouquet especially the large flower. Watch your lighting when shooting the lower left corner has a sheen from the light hitting it and washing out the green of the leaf. Also the reddish branch leading out of the top right corner is a distraction and could have been removed in post processing.



Open
“Purple Anemone”
13

Great detail, composition with this image. It appears there are spots of possibly pollen on the petals, these could have been removed with the healing brush so that they do not take away from the texture in the petals.



Open
“Morning Flower”
13

Lovely detail, very good DOF, the maker has left just enough room around the flower in this image. Suggest trying to keep the stem more in focus so that the viewer does not get the feeling the flower is floating in space, have the stem more visible grounds the subject.



Open
“Weathered Walkway”
13

Great image, the path leads the viewer into the image. Watch your horizon it appears slightly lower on the right



Lovely image of the pelican, sharp, great detail and composition.

**Open
“Pelican”
13**



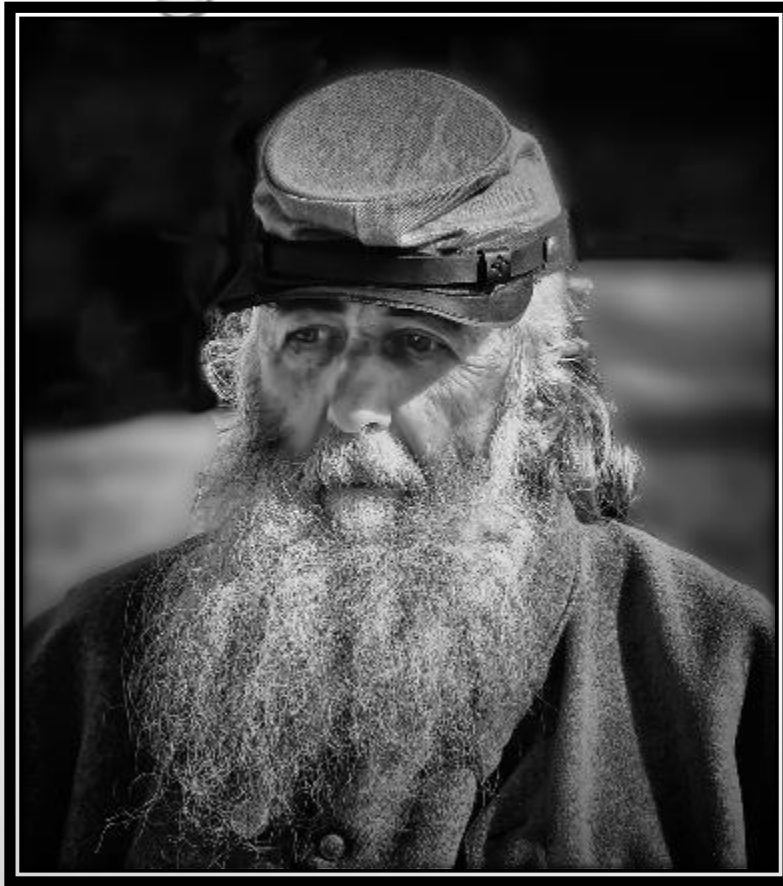
**Open
“Flamingo”
14**

Dramatic lighting great detail, well done



Open
“Ohio Pyle at Sunrise”
14

Using the fast shutter speed has frozen the water in the moment and shows the power of the waterfall.



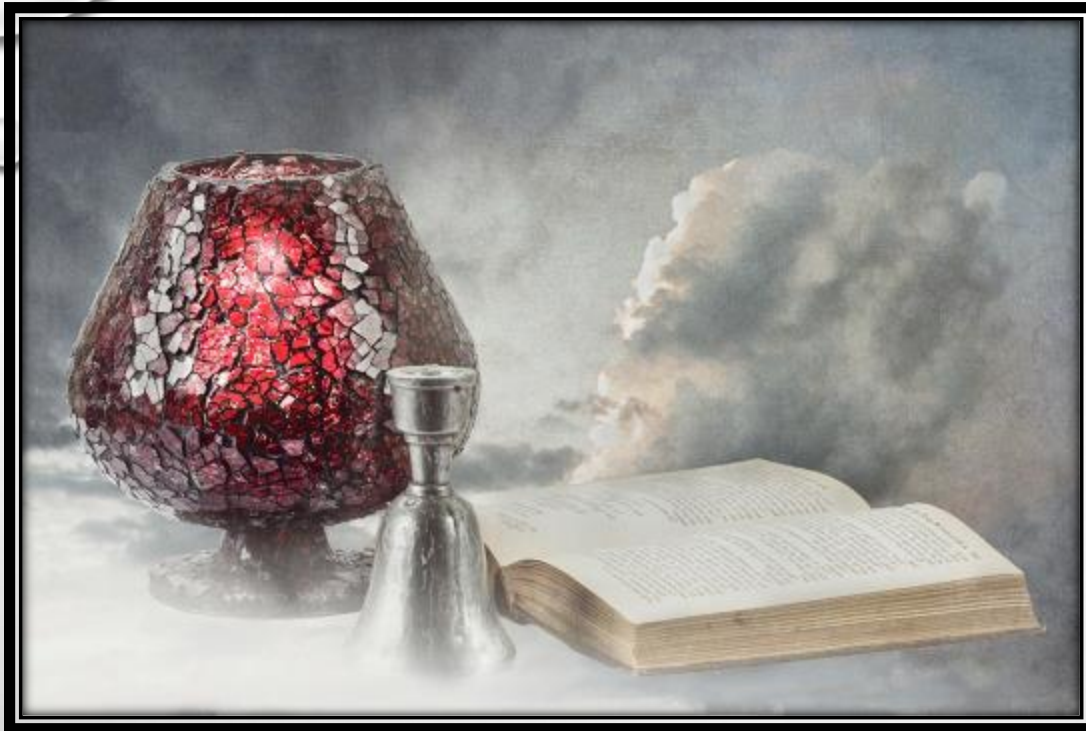
Open
“Soldier of Fortune”
15

**Great Images, love the
detail and the handling of
the lighting.**



Open
“Hagley Sunset”
15

Beautiful, dramatic scene well balanced with the huts on the left and the curving shoreline on the right.



**Open
“Bell-Book-
Candle in
Quarantine”
15**

Wonderful image very artistic, composition treatment all done very well in this image.